

REQUIEM AETERNAM

Introito - IV libro di Esdra 2,34,35 - Ps. 64,2.3.4.5

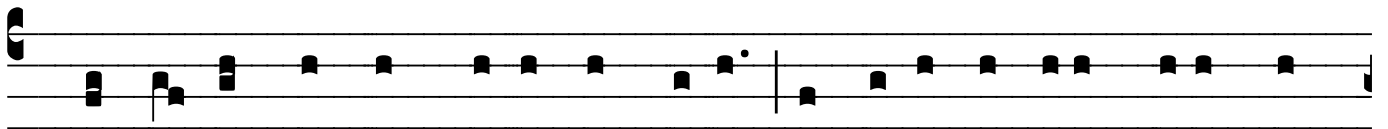
Intonazione consigliata: dalla nota Sol



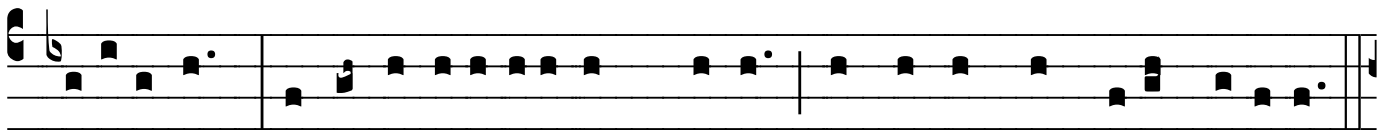
Requi- em * aetér- nam dó- na è- is Dómi- ne: et lux



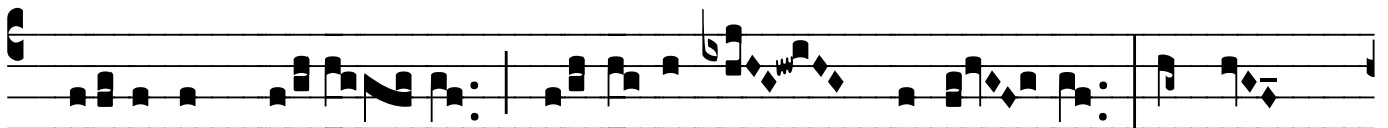
perpé- tu- a lú- ce- at è- is.



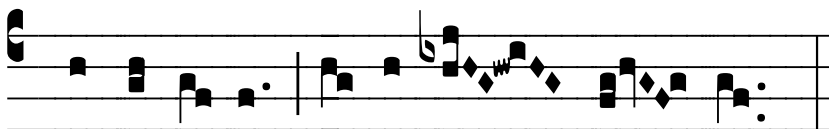
Ps. Te dé- cet hýmnus Dé- us in Sí- on, et tí- bi reddétur vótum in



Jerúsa- lem: * exáudi ora- ti- ónem mé- am, ad te ómnis cáro véni- et.



Requi- em * aetér- nam dó- na è- is Dómi- ne: et lux



perpé- tu- a lú- ce- at è- is.

*L'eterno riposo dona a loro, o Signore, e splenda ad essi la luce perpetua.
A te si conviene l'inno, o Dio in Sion, a te si scioglie il voto in Gerusalemme.
A te che ascolti la preghiera viene ogni essere umano.*

KYRIE - CHRIS TE

XIII sec.

Intonazione consigliata: dalla nota Sol

VI

Ký- ri- e * e- lé- i- son. *ij.* Chri- ste e- lé- i- son. *ij.*

Ký- ri- e e- lé- i- son. *ij.* Ký-ri- e * e- lé- i- son.